



WIS 13 Pavement Replacement Project

Bayfield County A to Douglas County Line

Ryan Jones, Design Project Manager
Neal Smith, Design Project Leader

Public Involvement Meeting

Port Wing Fire Hall, Port Wing, WI

Thursday, April 16, 2026

Meeting Overview

- Location
- Purpose
- Need
- Proposed Improvements
- Schedule
- Traffic Impacts
- Business Coordination
- Public Comment



Location

- Bayfield County, WI
 - Begins: Douglas County line
 - Ends: County A in Port Wing
 - Project length: 8 miles



Purpose

- Preserve and maintain the service life of the roadway surface
- Update guardrail that has reached the end of its service life
- Improve the condition of select bridges through maintenance work and erosion control restoration



Need

- Deteriorated pavement on WIS 13
- Aging guardrail along the project corridor
- Deteriorated bridge abutments and settled bridge riprap
- Change in Department guidance on certain paving materials



Settlement around Fish Creek Bridge abutment

Proposed Improvements

- Replace guardrail at seven bridges and box culverts along the corridor
- Repair Fish Creek and Iron River bridge abutments
- Place additional riprap at stream and select culvert crossings

Iron River Bridge approach



Proposed Improvements

- Mill some of the existing asphalt
- Pulverize the remaining asphalt with some existing base material
- Stabilize the pulverized material with asphalt emulsion
- Pave a new surface
- Paint roadway markings



Proposed Improvements



- Pave existing overlook



- Match existing side roads and driveways
- Refresh shoulder gravel

Schedule

Comments
due May 31,
2026

- Complete re-scoping coordination
- Notice to utilities

Summer
2026

- Remaining project coordination
- Final plans and contract language

October
2026

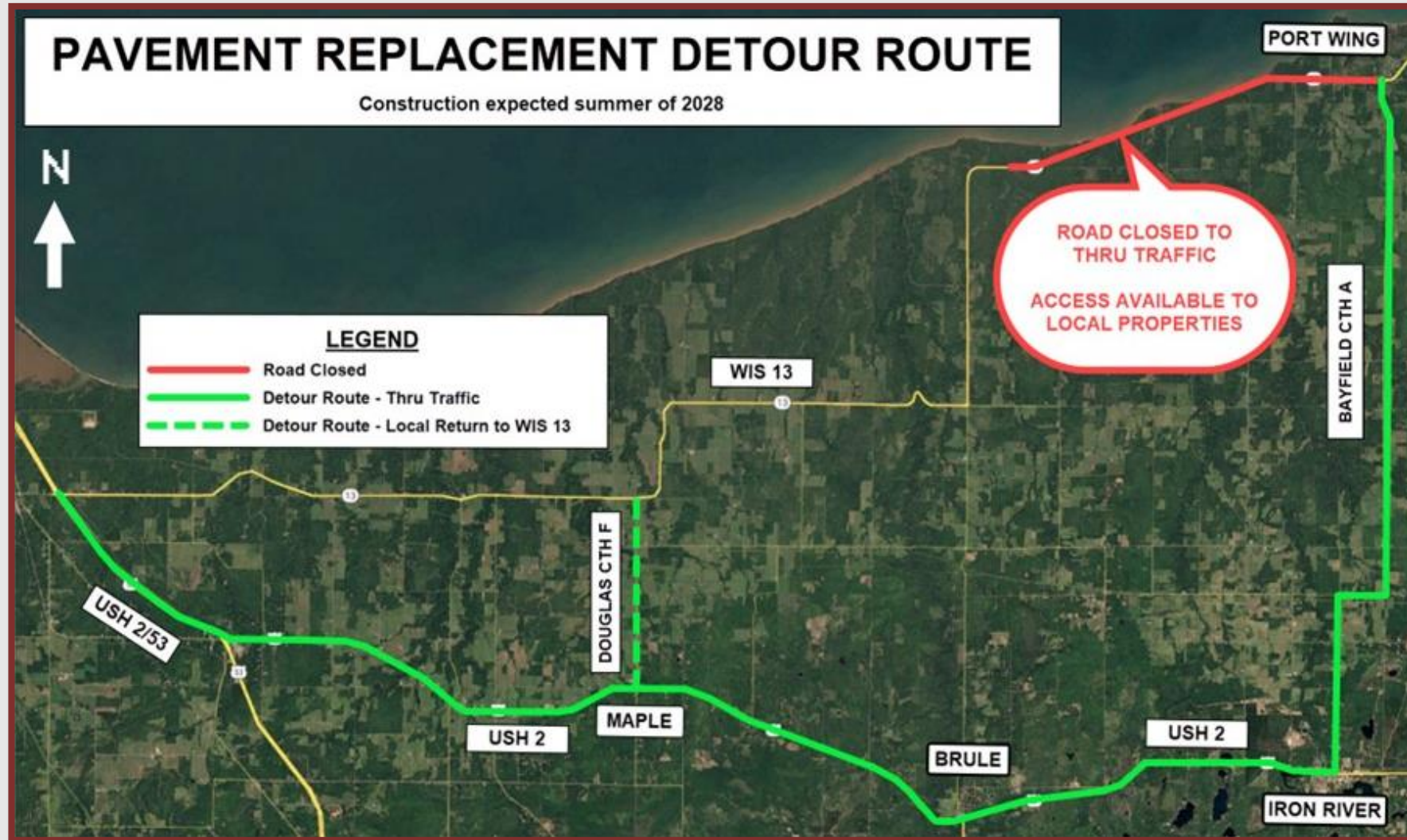
- State project submittal
- Formal department review of project documents

Spring to
Fall 2028

- Proposed construction
- Detour for at least eight to 10 weeks
- Project website will be updated with construction information



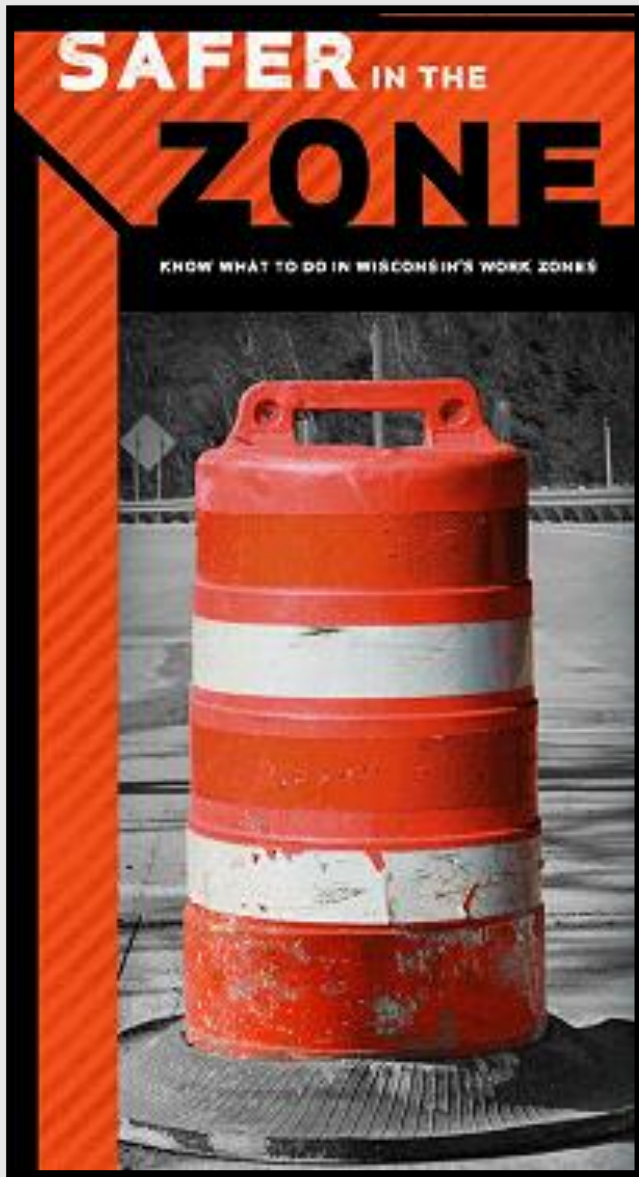
Traffic Impacts - Detour



Traffic Impacts - Detour

- WIS 13 will be closed to through traffic for at least eight to 10 weeks during the pavement replacement process.
 - Detour: Bayfield County A, US 2 and Douglas County F
 - The detour will be primarily required for pulverizing and paving operations.
 - Access to properties during construction will be maintained but may be by alternative routes.





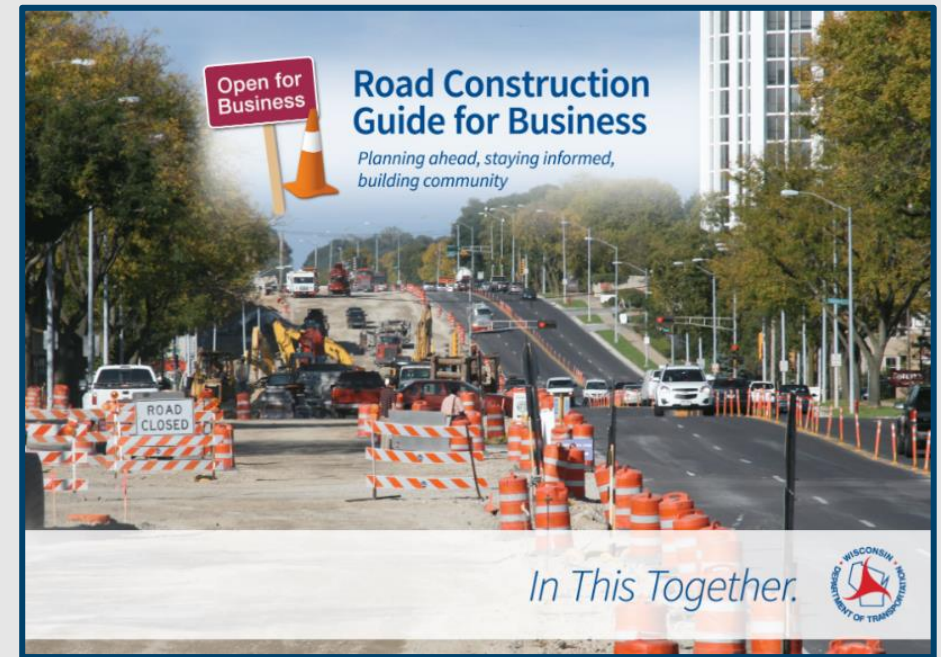
Traffic - Before/After Detour Impacts

- WIS 13 will be open to traffic before and after the bulk of the pavement replacement process.
- Motorists might encounter lane closures controlled by flagging or shoulder closures for structure work.
- Delays should be expected when traveling through the work zone.



Business Coordination

- Visit wisconsindot.gov/together
 - Tips, tools and resources
- Project team is here to help
 - What information would help you...
 - Inform customers about the project?
 - Coordinate with suppliers?
 - Communicate with employees?



Public Comment

- **Submit comments to WisDOT Project Leader Neal Smith by:**
 - Phone: (715) 919-7524
 - Email: neal.smith@dot.wi.gov
 - Mail: WisDOT Northwest Region- Superior
1701 N. 4th St.
Superior, WI 54880-1068
Attn.: Neal Smith
 - Comment form:
 - <https://wisconsindot.gov/Pages/projects/by-region/nw/wis13bc/default.aspx>

**Public
comment
period ends
May 31, 2026**

